



Code.1444

2020 CONFERENCE



Investor Conference

DISCLAIMER:

- ▲ This PPT encloses the info. of the company's internal and external data and includes the business performance, financial statement, and sales development.
- ▲ Lealea doesn't enclose any financial prediction. There might be variation or difference from actual situation if Q&A involves any predictive sales, industrial or financial matters. This is subject to the market demand & supply, price variation, competition, international economy, exchange rate or downstream/upperstream...etc.
- ▲ Company prospection in PPT is based on Lealea's point of view, and it may vary by time. Lealea is not responsible for any instant update nor reminder.

Agenda

- 
- 一. Company Profile
 - 二. Capacity
 - 三. Performance
 - 四. Industrial Trend(SWOT)
 - 五. Strategy from Lealea

LIBOLON

Company Profile

- Established Year: : 1979
- Capital: NT95.73billion
- Chairman : James Kuo
- Employees : 1082
- I.P.O: 1990 , TWSE (Code.1444)



Production Capabilities

1. Polyester Polymerization & Spinning Plant:

CP process → { CP1: 8000 T/Month
CP2: 8000 T/Month

BP process → { BP1: 280 T/Month
BP2: 280 T/Month
BP3: 1200 T/Month

SSP(Bottle grade) 6000 T/Month

BR(Bright chip) 2000 T/Month

TP(Recycle chip) 900 T/Month

PET Spinning Plant → { direct spinning: 4400 T/Month
chip spinning: 3200 T/Month



Production Capabilities

1.Changhua DTY Plant Factory: 7500 T/Month

2.OEM DTY: 250 T/Month



PT. INDONESIA LIBOLON FIBER SYSTEM

Production Capabilities _

LIBOLON
力寶龍
www.libolon.com.tw

Satff : 644

Preparation machine : 5 sets

Weaving : 385 sets

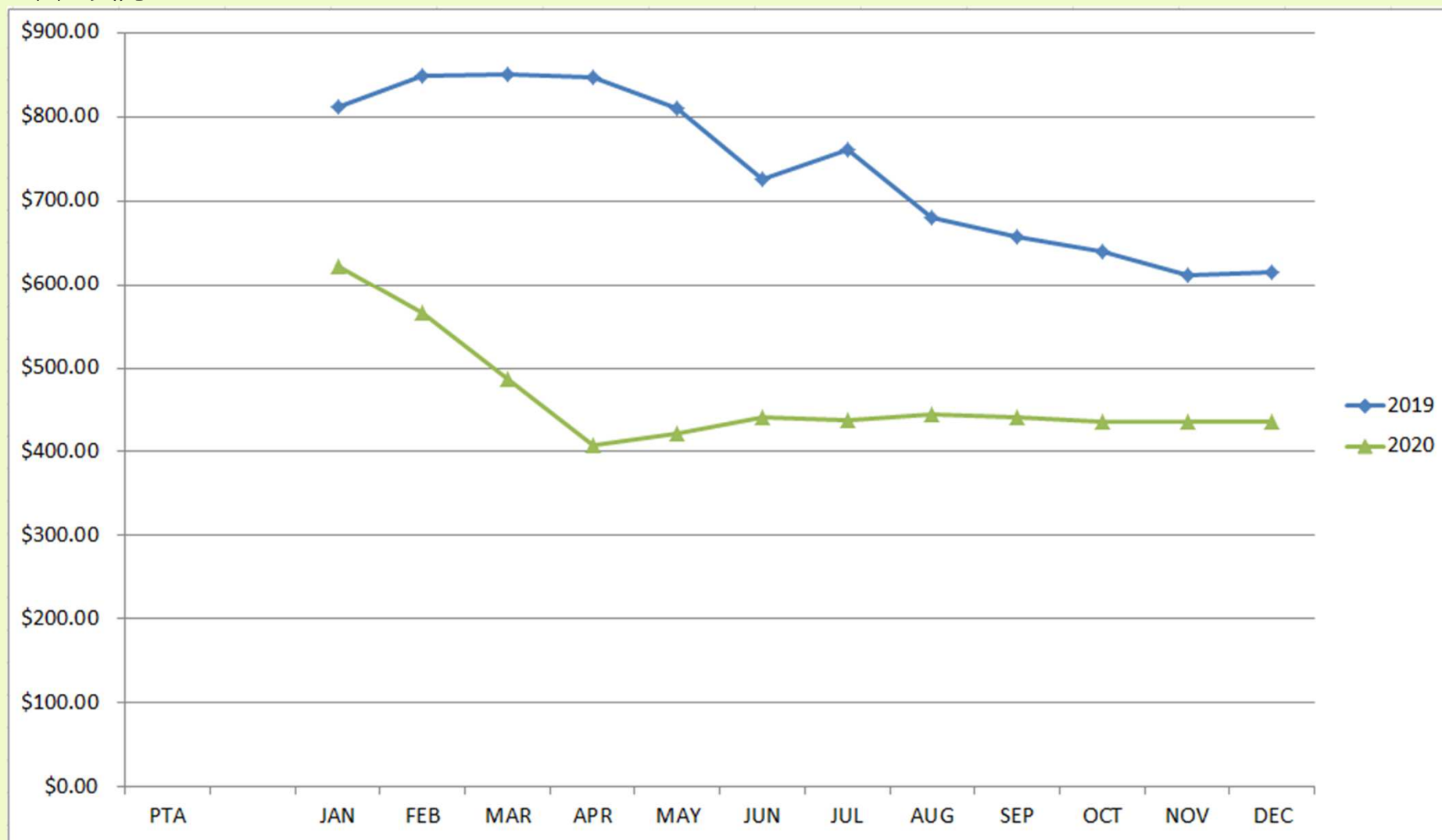
Knitting : 116 sets

Dyeing capacity : 550 million yards per month



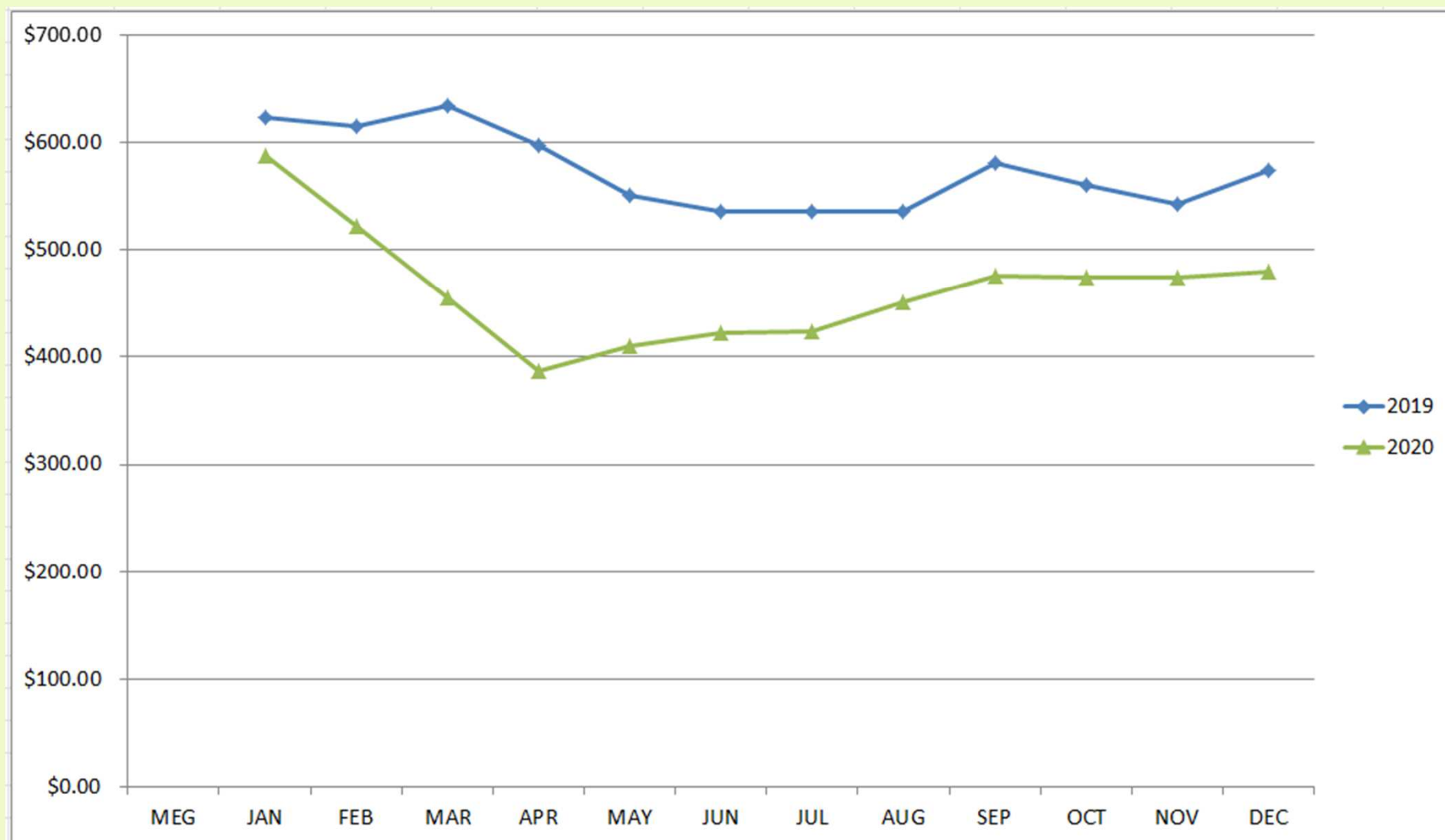
Material Trend

單位:美元



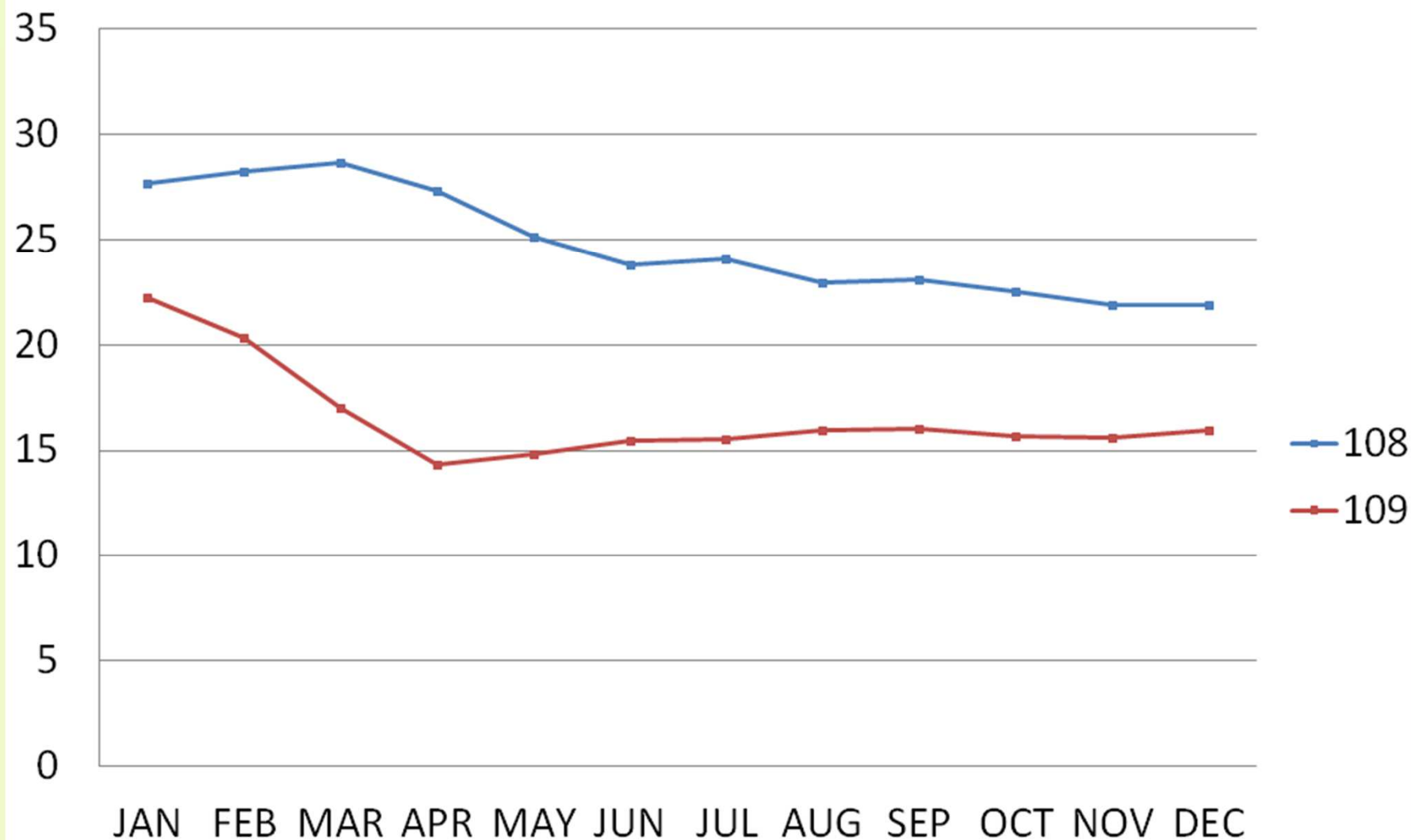
Material Trend

Unit: US dollar



Material Trend

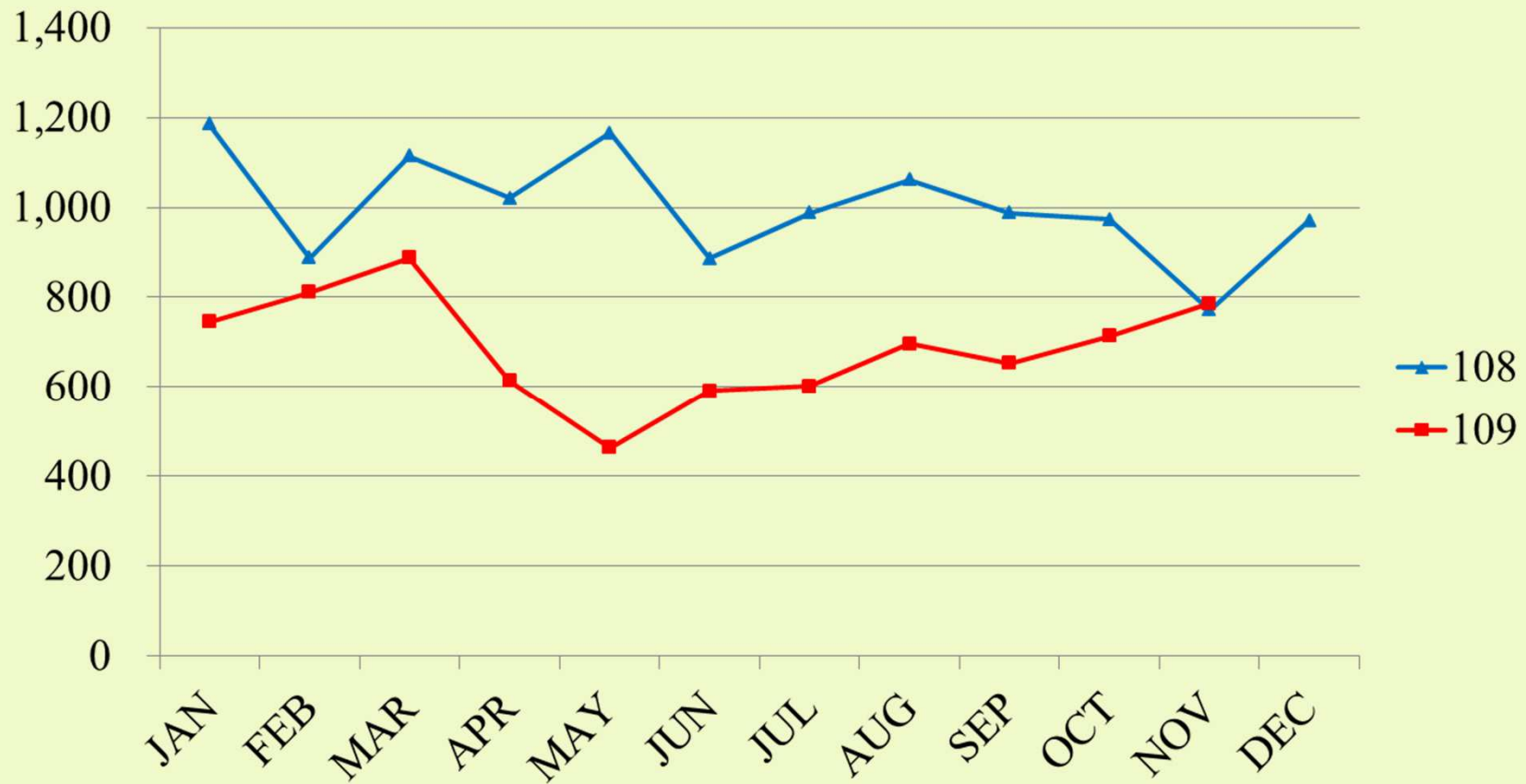
單位:台幣NT Unit: NT dollar



Lealea/Dept Income

單位:千元

Unit: million



Industrial trends

Strengths

1. Mature tech of recycle products, Green energy production, Smart management & more auto -production .
2. Fast Delivery & Diversity but small qty.
3. Taiwan R&D & order planning-Overseas production
4. More cooperation & R/D with other industry
Technical support & cooperation from other companies.
5. Easier cost control from the stable oil price.

Industrial trends

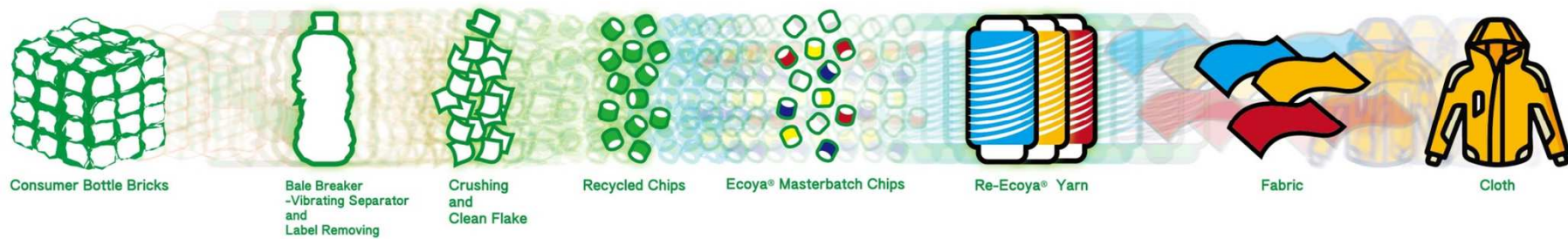
Weaknesses

1. Duty barrier to textile material sales due to RCEPT.
2. Slow market recovery & market impact of uncertainty of COVID-19.
3. Low DTY(down stream product) price these two years
from over capacity expansion(PX 、PTA 、CPL) in China.
4. Profit reduction from the strong NTD dollar & increasing freight cost.

Strategy/Measures:

1. Invest Circular economy business & expand the capacity of recycle products.
2. Replace new from old facility & more Chip spinning (specialty items) from D.S.
3. New Pin Type DTY facility for micro-denier Nylon DTY.
4. Advance the integrated production in Indonesia from yarn, weaving/knitting and dyeing due to RCEPT.
5. New sales dept. for synthetic material in electronic application.
6. Investment and Continuous improvement on 100% green Energy production & 60% Carbon reduction(by 2030).
7. Activate assets & More cooperation with different industries.

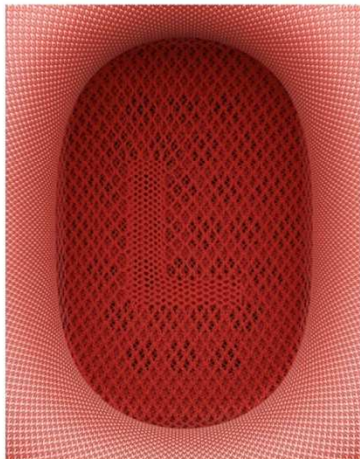
Live a GREEN cycle



LIBOLON

Cooperation

LIBOLON
力寶龍
www.libolon.com.tw



HomePod mini

購買

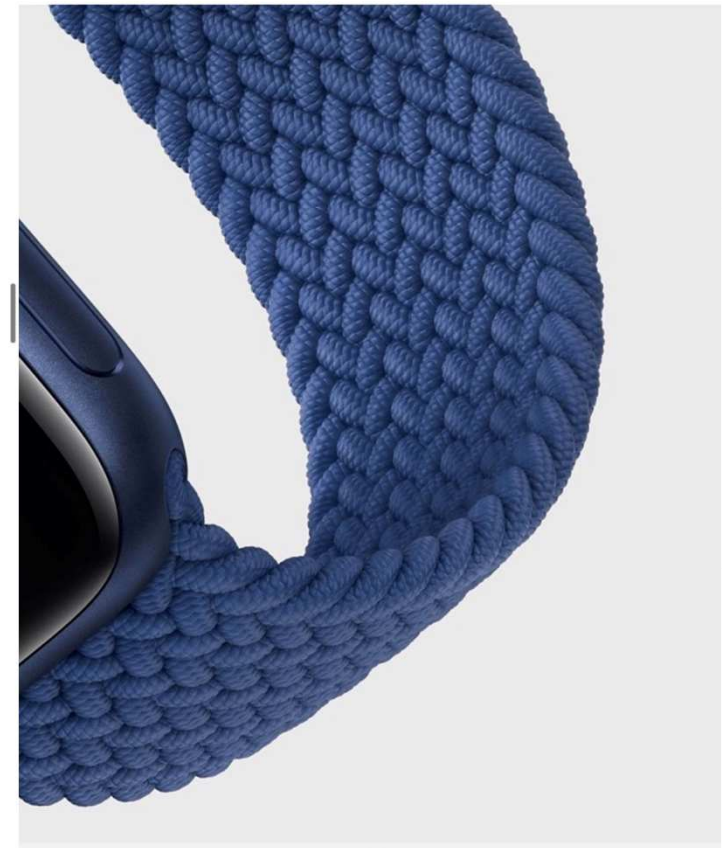
**Watch braided loop band:
Extendable Recycle yarn
for more flexibility and comfort.**



Apple 獨家提供

編織單圈錶環

採用具延展性再生紗繩與矽膠線編織而成，無錶扣
無扣環的設計，配戴超舒適。





LIBOLON
力寶龍
www.libolon.com.tw



↑ Amazon Echo Dot (4th)

← Google Nest Audio

Visit Tour & Cooperation

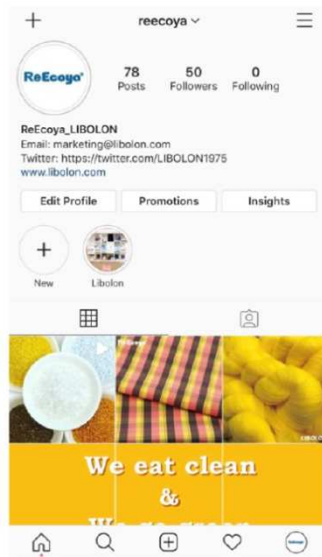
LIBOLON
力寶龍
www.libolon.com.tw



↑ 2020 Taiwan Circular Economy summit
← Chicony Group (Electronics)

Follow us

LIBOLON
力寶龍
www.libolon.com.tw



Q&A